

# Tucson Electric Power North Alvernon 46-kV Substation

Special Exception Land Use Permit

---

DESIGN REVIEW BOARD COURTESY REVIEW

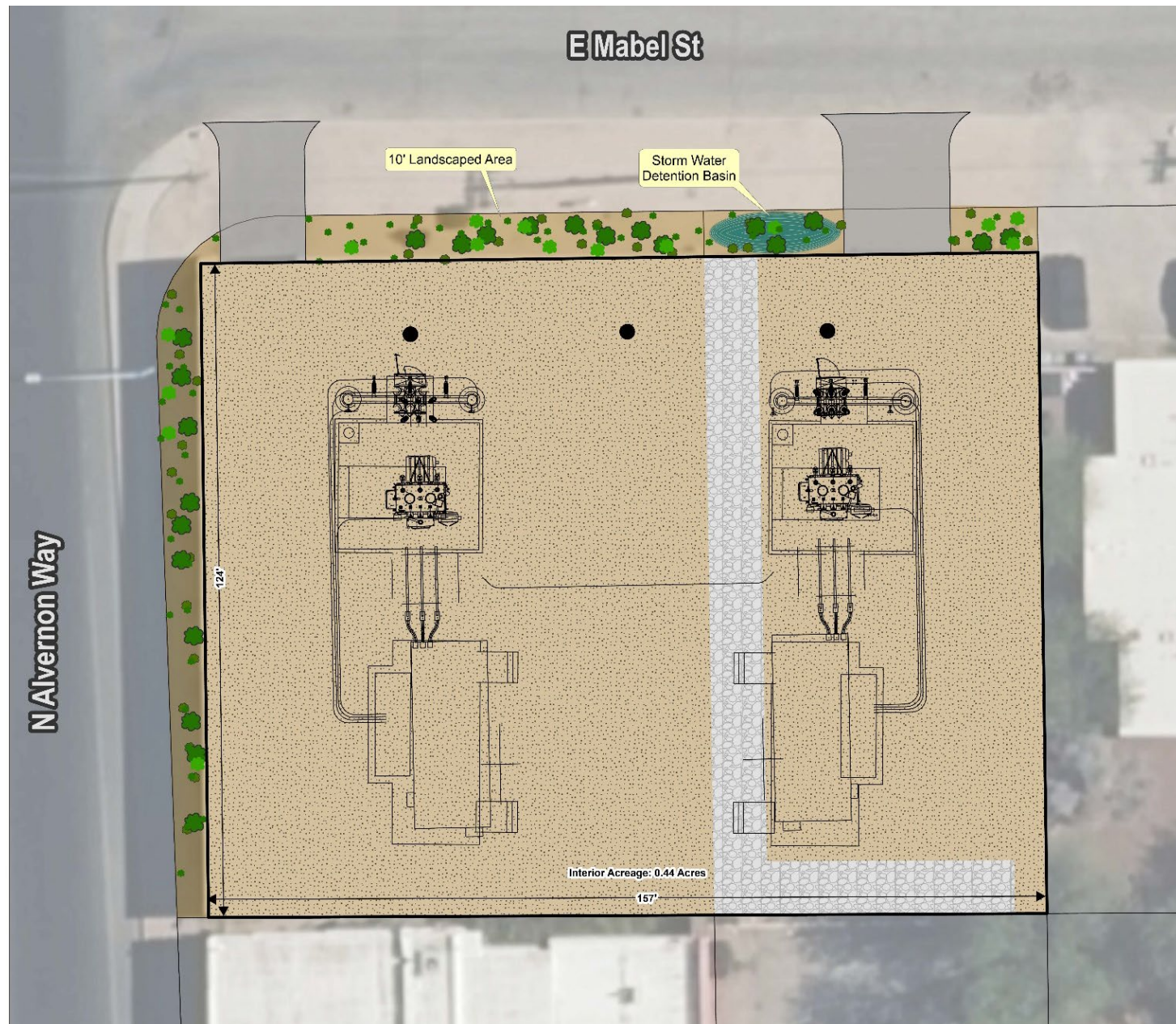
OCTOBER 18, 2024

# Agenda:

Design Review Board  
Courtesy Review

---

- Conceptual Site Plan Rendering
- North Alvernon Existing Condition
- Preliminary Landscape Plan
- Visual Simulation



CONCEPTUAL SITE PLAN RENDERING



EXISTING CONDITION OF NORTH ALVERNON SUBSTATION



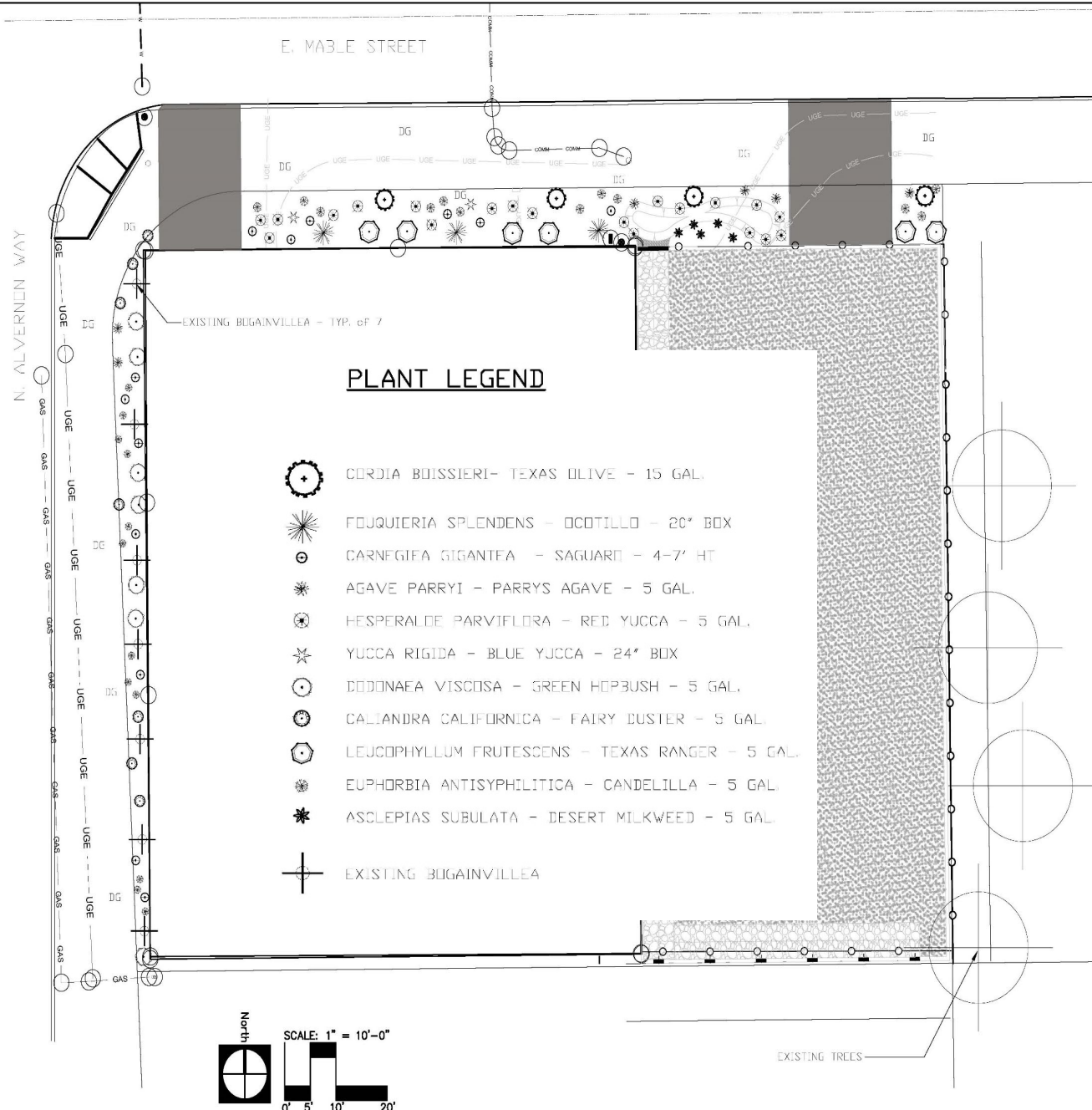
EXISTING CONDITION OF NORTH ALVERNON SUBSTATION



EXISTING CONDITION OF NORTH ALVERNON SUBSTATION



EXISTING CONDITION OF NORTH ALVERNON SUBSTATION

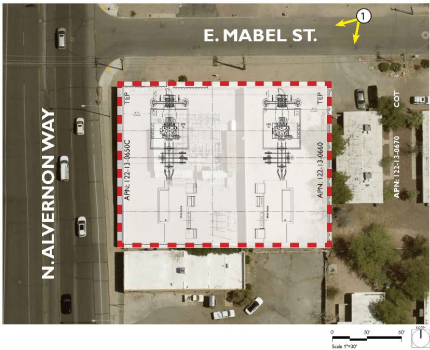


# PROPOSED LANDSCAPE PLAN

PHOTO SIMULATION | KEY OBSERVATION POINT #1



VIEW FROM MABEL STREET  
IN FRONT OF 3922/3924 E. MABEL ST. (DUPLEX)  
LOOKING SOUTHWEST TOWARDS THE SUBSTATION



Note: This exhibit is for illustrative purposes only and is subject to change pending final engineered plans. The simulation used the Alvernon TEP Substation Preliminary Landscape Plan as a basis for rendering streetscape vegetation. Existing trees sited on the duplex parcel are assumed to be removed for this project. See final approved landscape plans for final planting design. Transmission structure locations are subject to ACC CEC approval. Locations shown are estimates based on PDF site plans provided.

NORTH ALVERNON SUBSTATION

09/20/24

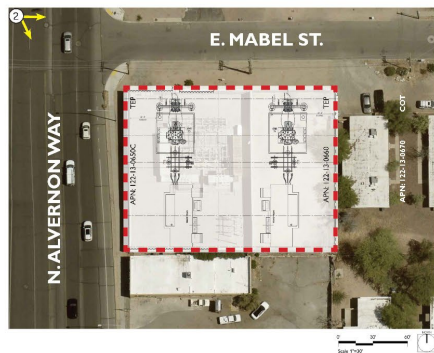
THE  
**PLANNING CENTER**  
PLANNING | LANDSCAPE ARCHITECTURE



## PHOTO SIMULATION | KEY OBSERVATION POINT #2



VIEW FROM WEST SIDE OF ALVERNON WAY  
AT THE NORTHWEST CORNER OF ALVERNON WAY AND MABEL STREET  
LOOKING SOUTHEAST TOWARDS THE SUBSTATION



Note: This exhibit is for illustrative purposes only and subject to change pending final engineered plans. The simulation used the Alvernon TEP Substation Preliminary Landscape Plan as a basis for rendering streetscape vegetation. Existing trees sited on the duplex parcel are assumed to be removed for this project. See final approved landscape plans for final planting design. Transmission structure locations are subject to ACC CEC approval. Locations shown are estimates based on PDF site plans provided.

**NORTH ALVERNON SUBSTATION**

093274

THE  
**PLANNING CENTER**  
PLANNING | LANDSCAPE ARCHITECTURE



HARRISON SUBSTATION LANDSCAPE SCREENING ADJACENT TO R-1



**Chris Ortiz y Pino** | TEP Environmental Land Use Planner

Christopher.ortizypino@tep.com | 520-633-8693

<https://www.tep.com/north-alvernon/>