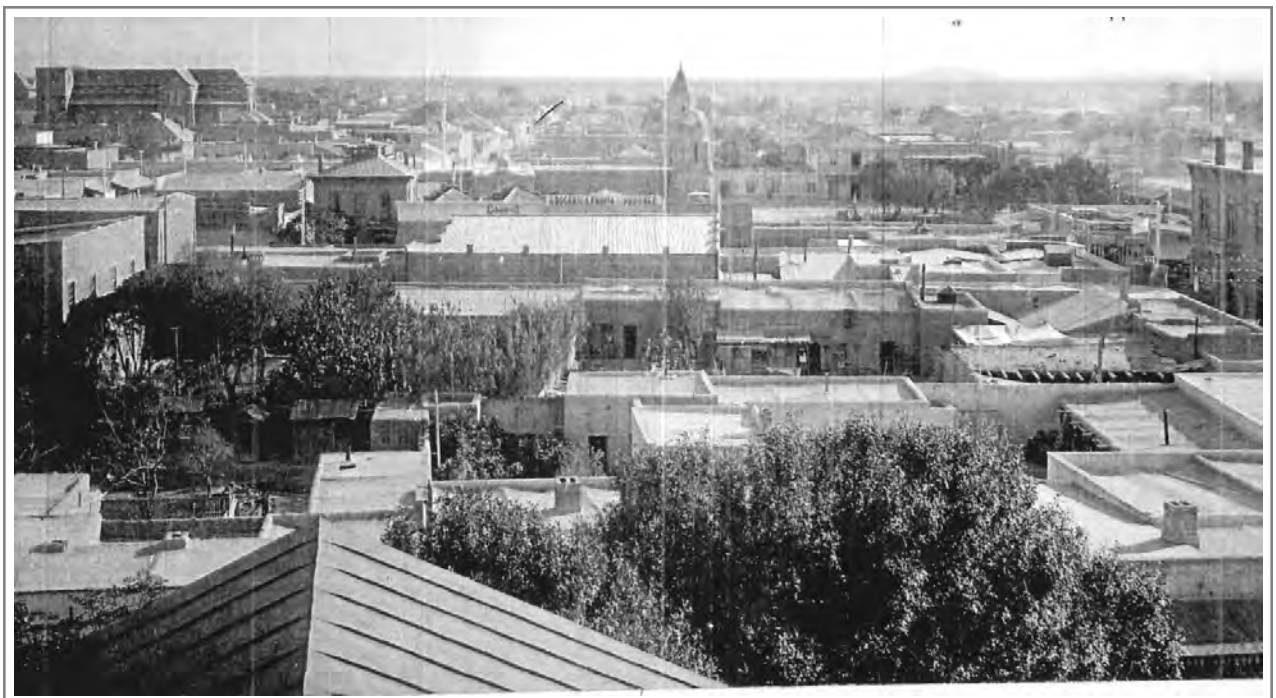


Appendices

Two Images of the area c1912, looking south (APHZAB files, AHS)



Two Images of the All Saints Church.

The first, about 1920-21, during construction. The brick facing going on from the east (AHS, Places-Tucson-Aerial Views) Note construction shed on east side of lot.



The completed All Saints Church in 1923 (AHS- Beuhman Collection).



Two Images from a 2-14-1929 Aerial photo (AZ Daily Star archives)

Image: overview.



Tucson looking north from about 20th Street in 1929. Sixth Avenue runs through the center of the photo, with the sprawling Southern Pacific Railroad yard angling in from the right.

Tucson Citizen



Closeup Image, 2-14-1929. Note roof and chimney of 410 indicated west, behind tree, shed removed.

Two Images from 5-10-1924 Aerial photo (A5-Army Corps of Engineers photo, negative image courtesy AHS).

A5 Large Image.





Close up magnified image. Note construction shed on east side of lot.

Based on available evidence, likely (front) East and (back) West Elevation sketches of original 410 S 6th Ave Priests House (courtesy J Burr).



East Facade



West Facade

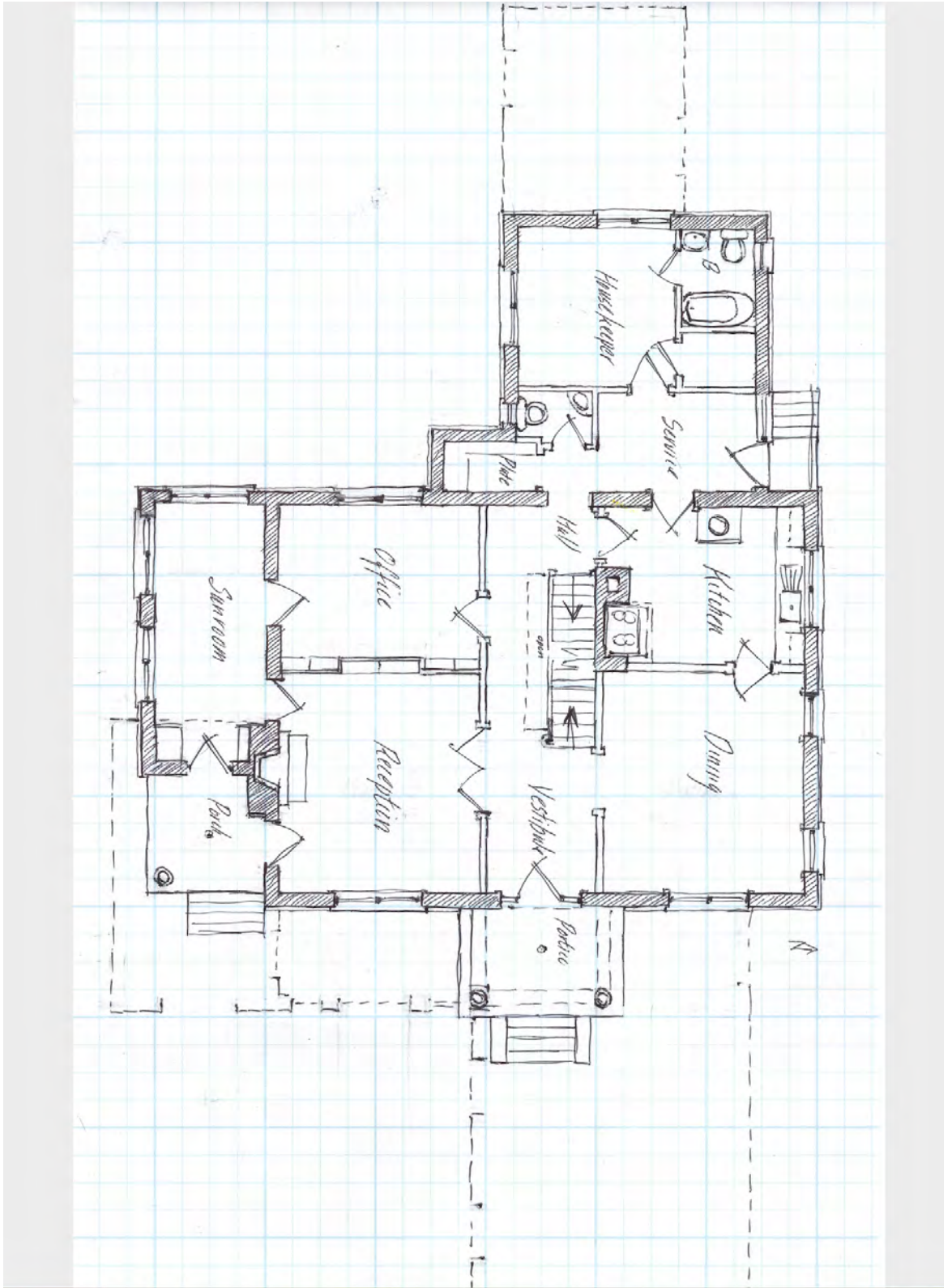
Based on available evidence, likely South and North Elevation sketches of original 410 S 6th Ave Priests House (courtesy J Burr).



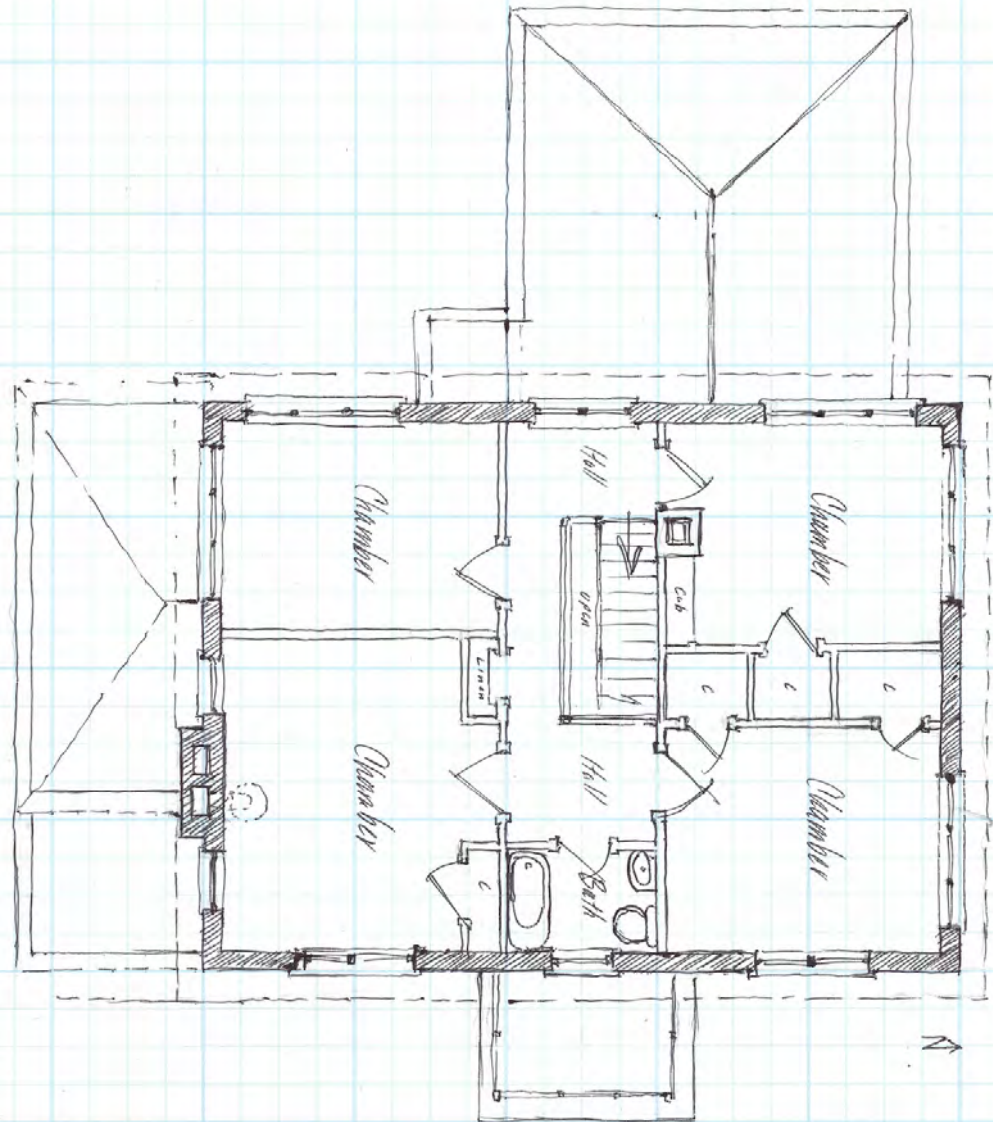
A hand-drawn floor plan of a house, oriented horizontally on a blue grid background. The plan includes the following rooms and features:

- Living room:** Located at the top left, containing a sofa and a coffee table.
- Dining room:** Located at the top right, containing a dining table and chairs.
- Kitchen:** Located at the bottom right, containing a sink, stove, and refrigerator.
- Bathroom:** Located at the bottom left, containing a bathtub, toilet, and sink.
- Office:** Located in the center, containing a desk and chair.
- Reception:** Located in the center, containing a reception desk.
- Sunroom:** Located at the top right, containing a large window and a chair.
- HALL:** A central hallway with 'UP' and 'DOWN' arrows indicating the staircase.
- Porch:** A small porch area at the bottom right, labeled 'Patio'.
- Entrance:** A small entrance area at the bottom left, labeled 'Patio'.

The drawing is done in black ink with some hatching for walls and furniture.



Based on available evidence, likely Second Floor Plan sketch for original 410 S 6th Ave Priests House (courtesy J Burr).



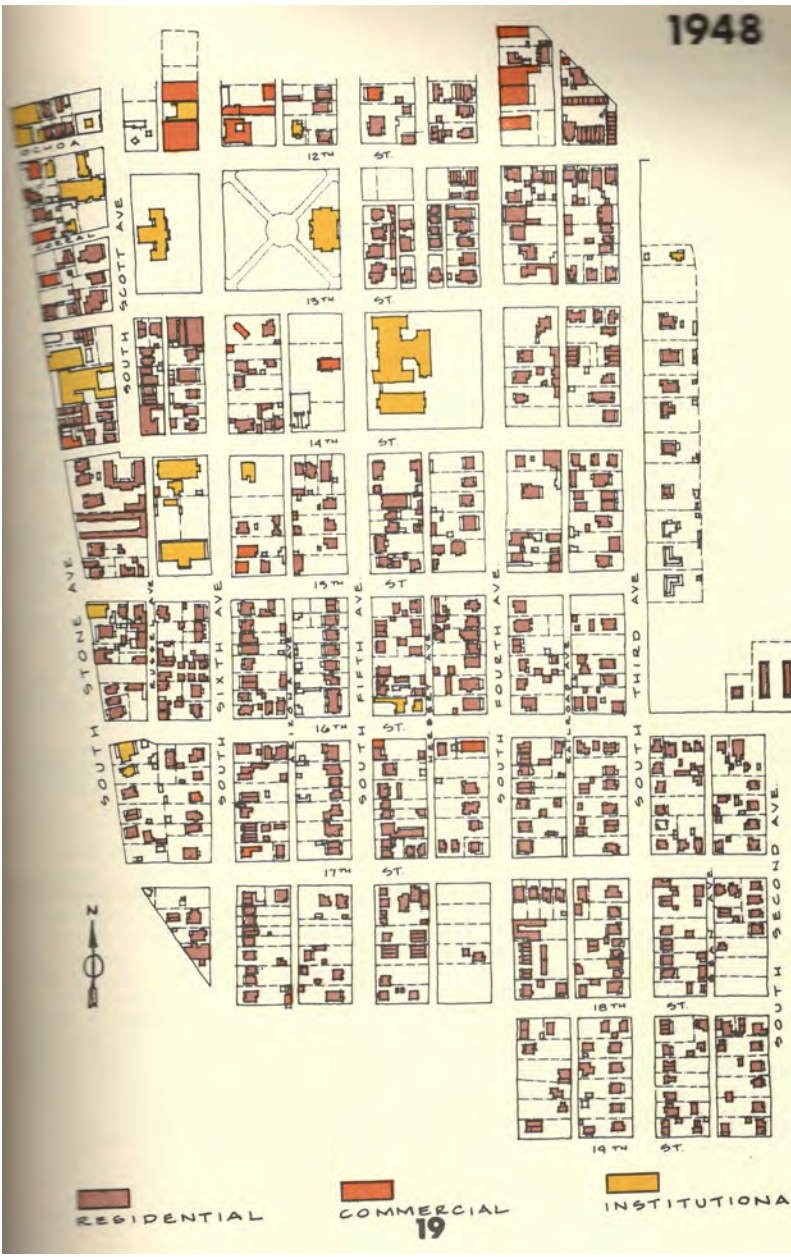
Armory Park ff74 maps for Armory Park, based on Sanborn Fire maps, for 1901, 1919, 1948;
 *1974 map (what buildings remained), used for 1974 City of Tucson listing, 1976 National
 Register listing (College of Architecture, University of Arizona, Giebner, 1974).



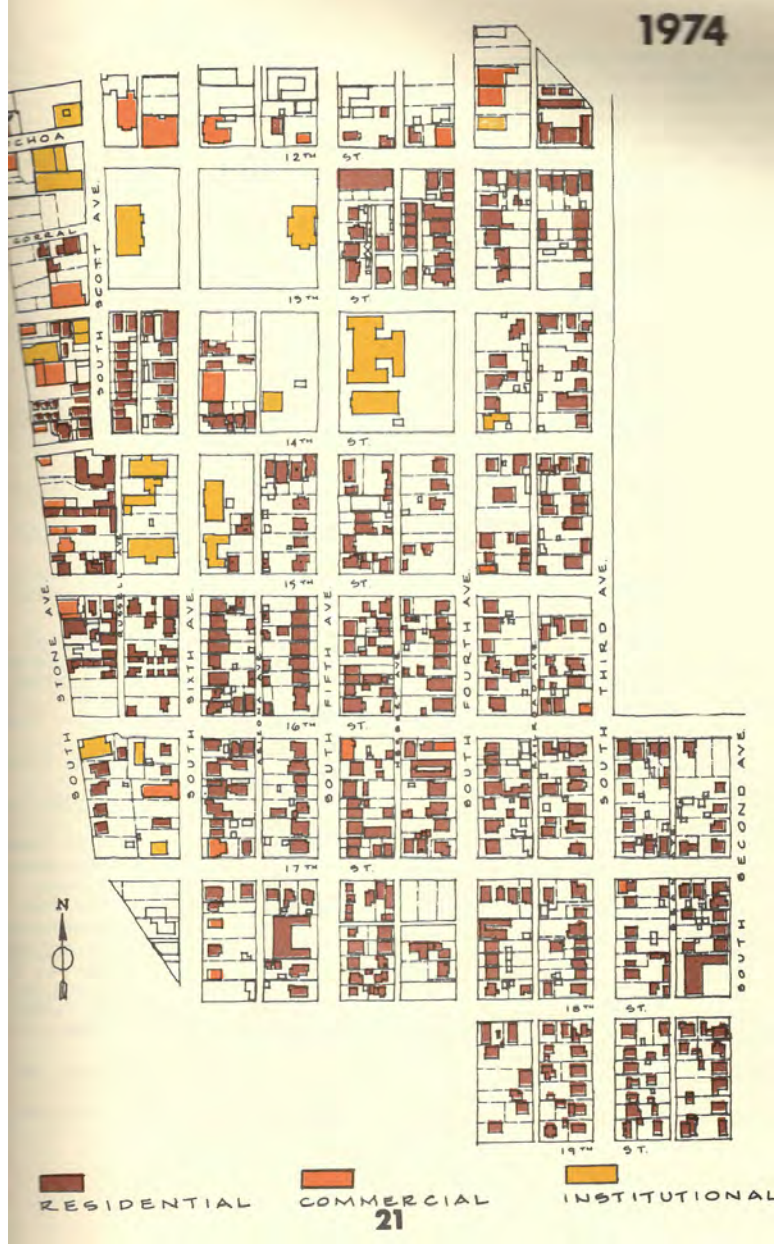
1919



1948



1974



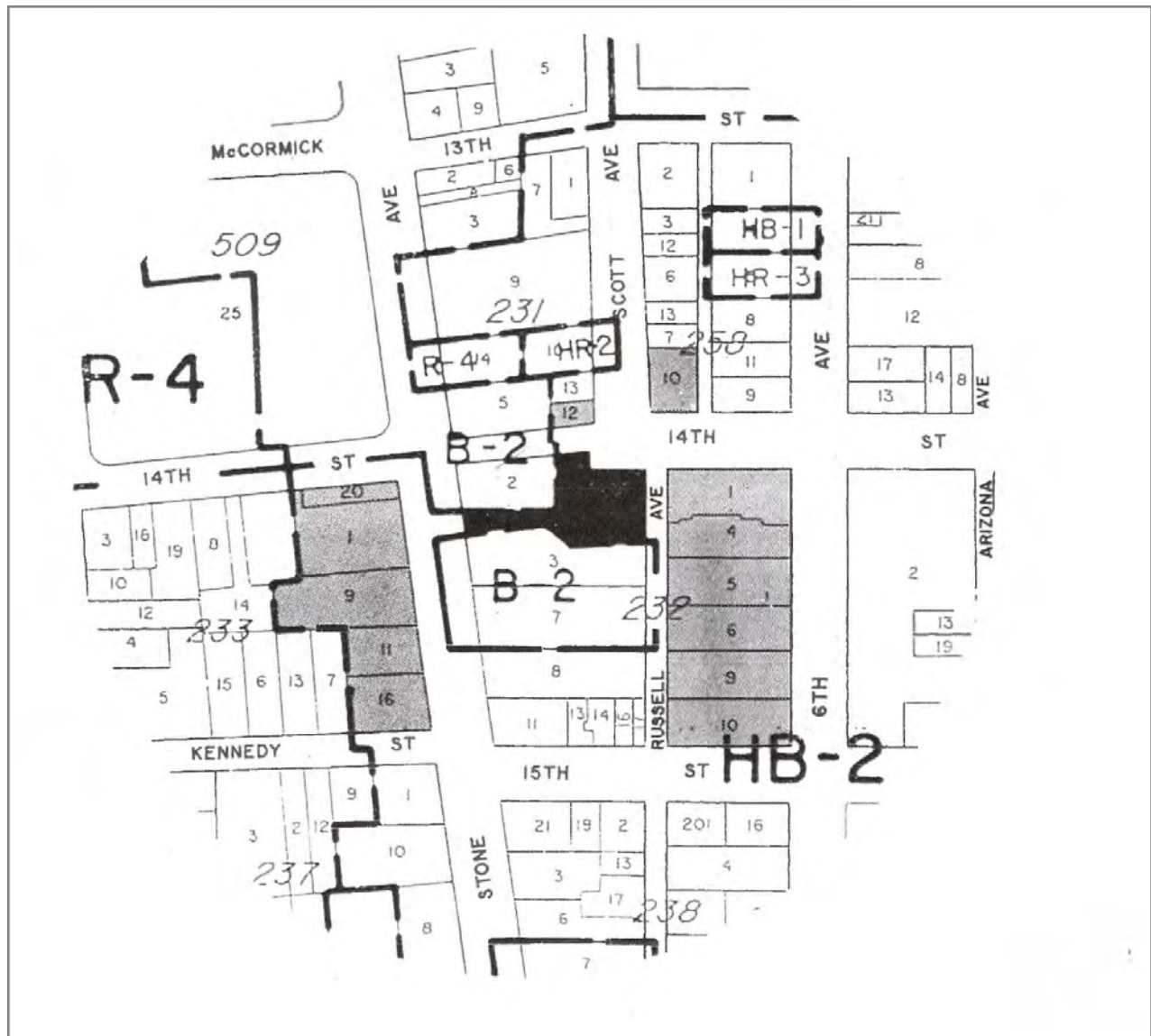
Armory Park ff74 map of Building Classifications (A-E) Note: all lots drawn at standard plots lots, not as parcels.



Three Images of Block 232 at time of 1976 National Register listing.

Lots 1 and 4 are a single parcel. Lots 2,3, and 7 were excluded from the listing. Note: Block 109 immediately adjacent east.

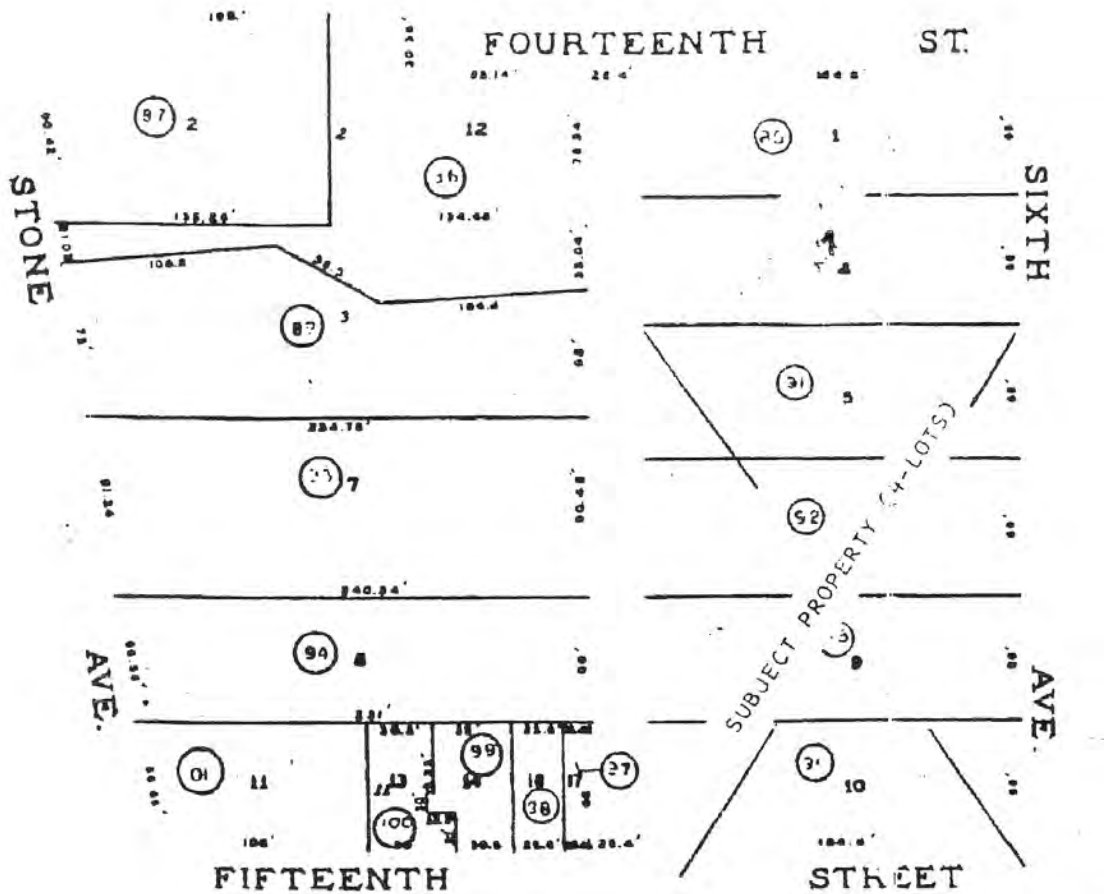




1991 shortly after splitting lots 1 and 4 in 1990, showing irregular 1990 lot split.

CORD MAP

BLOCK 232. CITY OF TUCSON



SCALE-1"=

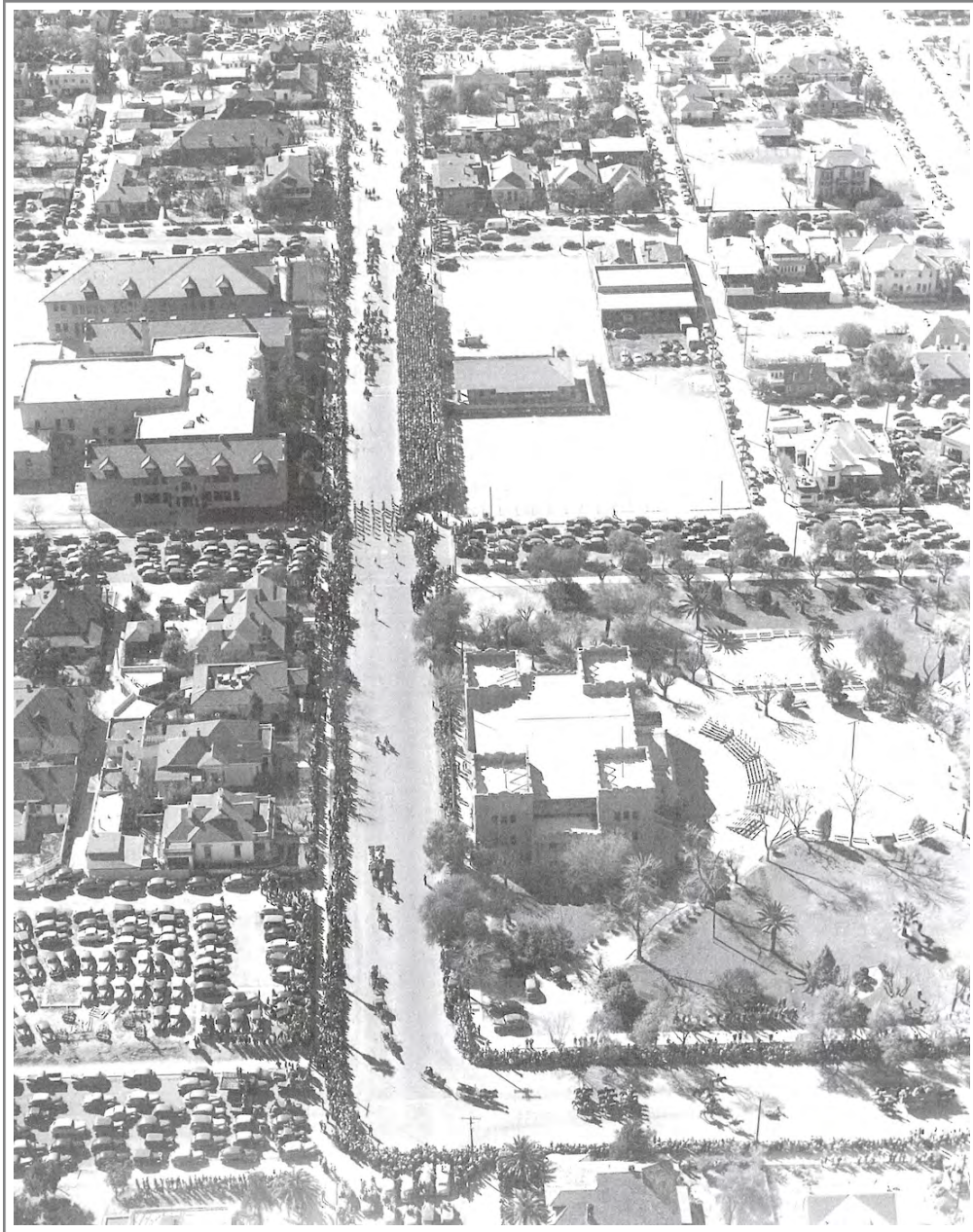
SEE BOOK

1997 showing lots 5, 6, 9, 10 still as a single parcel. Taken from an older map showing original platted lots, 1, 4 as both 66' x 184.8' standard AP lots. Lot 12 (HPZ) has a leg to Stone Ave.

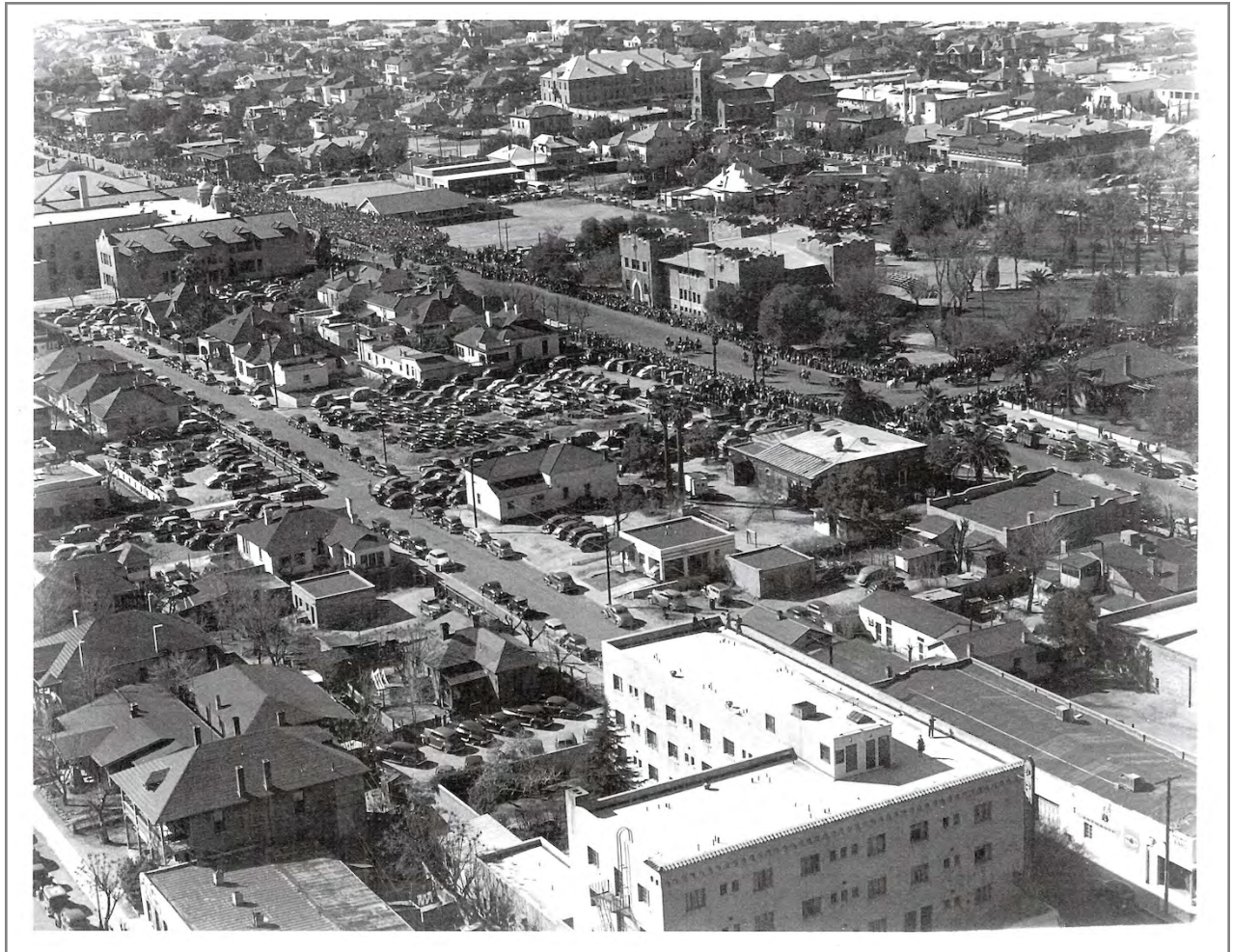
1936 Rodeo Parade aerial image. Parade is down S 6th Ave. (Mapping Racist Covenants, resources)



c1939-40 Rodeo Parade image (AHS- Magee Collection). Note mansion in upper right corner, 100 block E 14th St, was purchased by the Catholic Diocese (1930s) to be used as a Catholic School.



c 1940 Rodeo Parade image (AHS). Note: All Saints and Immaculate Heart Academy at top center



1946 Image showing downtown Tucson (AZ Daily Star archives). Downtown was still the central hub of Tucson.



A bustling Stone Avenue and downtown Tucson in December, 1946. Steinfeld's Department Store (replaced by the Bank of America tower) was probably stocked for Christmas. What's still there? The Valley National Bank building (now Chase Bank), the Pioneer Hotel building, the Fox Theater (lower left) and not much else.

Reginald Russell / Tucson Citizen

1947-48 Aerial Photos (AHS-Magee Collection)

First Image: Overview looking South. All Saints Church area upper left.



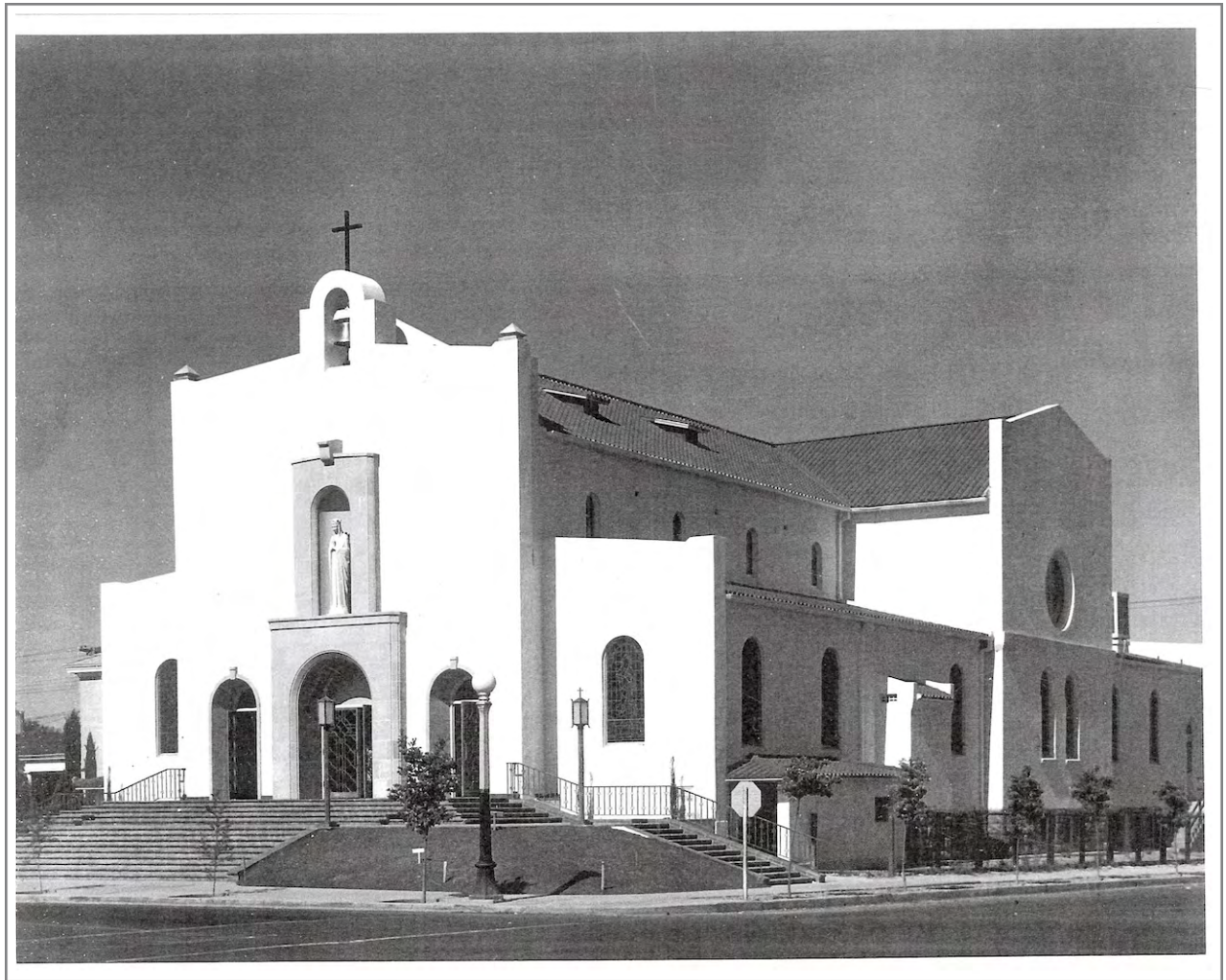
Second Image 1947-48. Blocks 109 and 232 are in center of image. Note: All Saints Church has been remodeled into the Spanish Colonial Revival style. The Catholic School (415 S 6th Ave).is in construction. The two remaining houses to the south have yet to be joined and modified into 435 S 6th Ave. The Mansion on the north remains as school. The 410 original pyramidal roofed structure with west service wing (as well as the 3-bay garage on Russel Ave), have yet to be renovated over the next 2-3 years.



Third Image 1947-48. At the bottom of the photo, the 2 story garage and apartment, on the Immaculate Heart parcel remain. Center, at the bottom of the image, next to Brady Court, you can see the demolition works of two of the houses on block 232, lot 2. The large house on lot 3 was demolished by the time of the 1949 Sanborn map. The "L" shaped structure behind Brady Court, an 1880's adobe structure (last of its type in Armory Park), is also slated for partial demolition with this project.



1948-49 Image of All Saints Church as remodeled (AHS, Levitz collection, Tucson-Churches-files).



Two Aerial Photos, looking North, late 1948 (AHS-Magee Collection).
Image 1: Larger area of downtown Tucson.

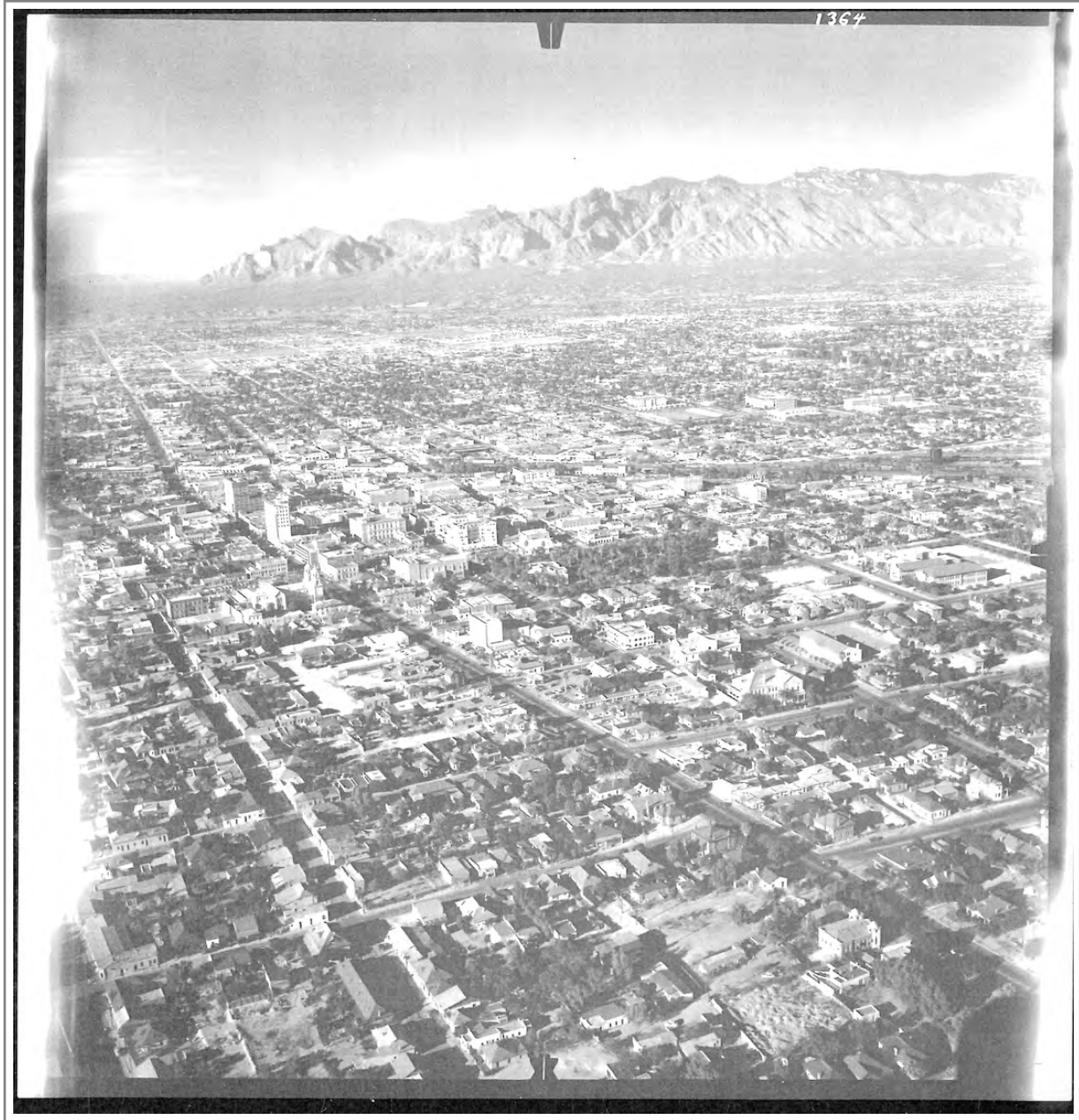


Image 2. Close up of area. Note Catholic School is completed. The two houses directly south have yet to be transformed into 435 S 6th Ave. The Mansion that housed the earlier school on 14th St. has been demolished. 410 not yet renovated. Despite the 2 large trees, one can clearly discern the chimney, and the single window immediately right, on the 2nd floor. The 2nd iteration of a construction shed, at the east, on the south lot line, shown on the 1949 Sanborn map is not yet built.



Two 1957 Aerials (AHS-Magee Collection), showing completed dormitory block (1956-57) on Immaculate Heart parcel.

Image 1: View from the South, see lower right.



Image 2: Later in 1957, View from the North, Rodeo Parade. see upper center right. The roofline of remodeled 410 S 6th Ave Priests House, is clearly evident.



Close up of area from above image.

